

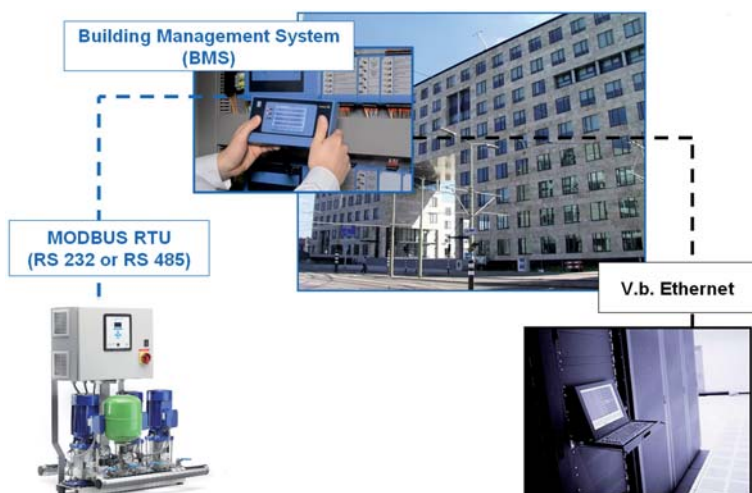
ModBus®

Advanced communication

In situations where you want real time information on your pump system located at large distance or when you want to centrally monitor all your installations, your pump installation must be capable of communicating with your Building Management System (BMS). The new DP-Pumps ModBus application generates the information on your pump installation from the Megacontrol and sends it to the BMS, enabling you to control your installation through the Building Management System.

The following information can be communicated through the ModBus® application

- System pressure
- Status of the pumps
- Actual system and pump load
- Inlet pressure
- Ambient temperature of booster system room
- Data generated by the Water Stream Detector
- Current failures in the system



The ModBus® is available as an option on all new installations with a Megacontrol III, but can also be integrated on all operational installations with a Megacontrol II.

Technical specifications ModBus RTU:

Power supply: 9 -24 V DC/AC

Input:

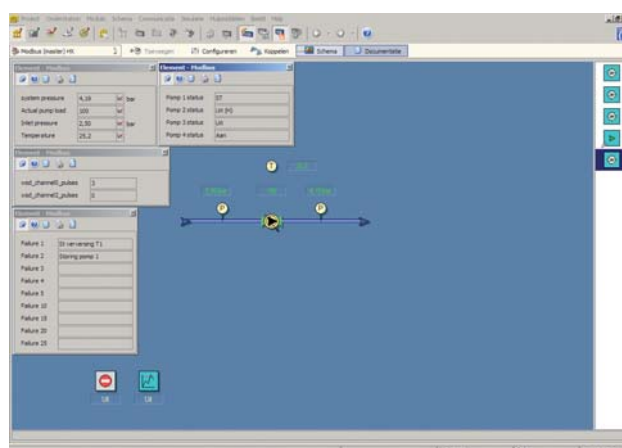
- USB Connector for connecting to MC-III Unit
- DB – 9 Connector for connecting to MC-II Unit

Output:

- RS-485 / ModBus® output 2 pin phoenix connector
- RS-232 / ModBus® output DB – 9 connector

8 Dip switches

- To set up slave address



dp pumps

p.o. box 28
2400 AA Alphen aan den Rijn
Holland
t +31 172 488 388
f +31 172 468 920

dp-pumps@dp-pumps.nl
www.dp-pumps.com

