

1 Instruction Sheet

1.1 Cartridge seal replacement V(C/S) 85 B

© 2011

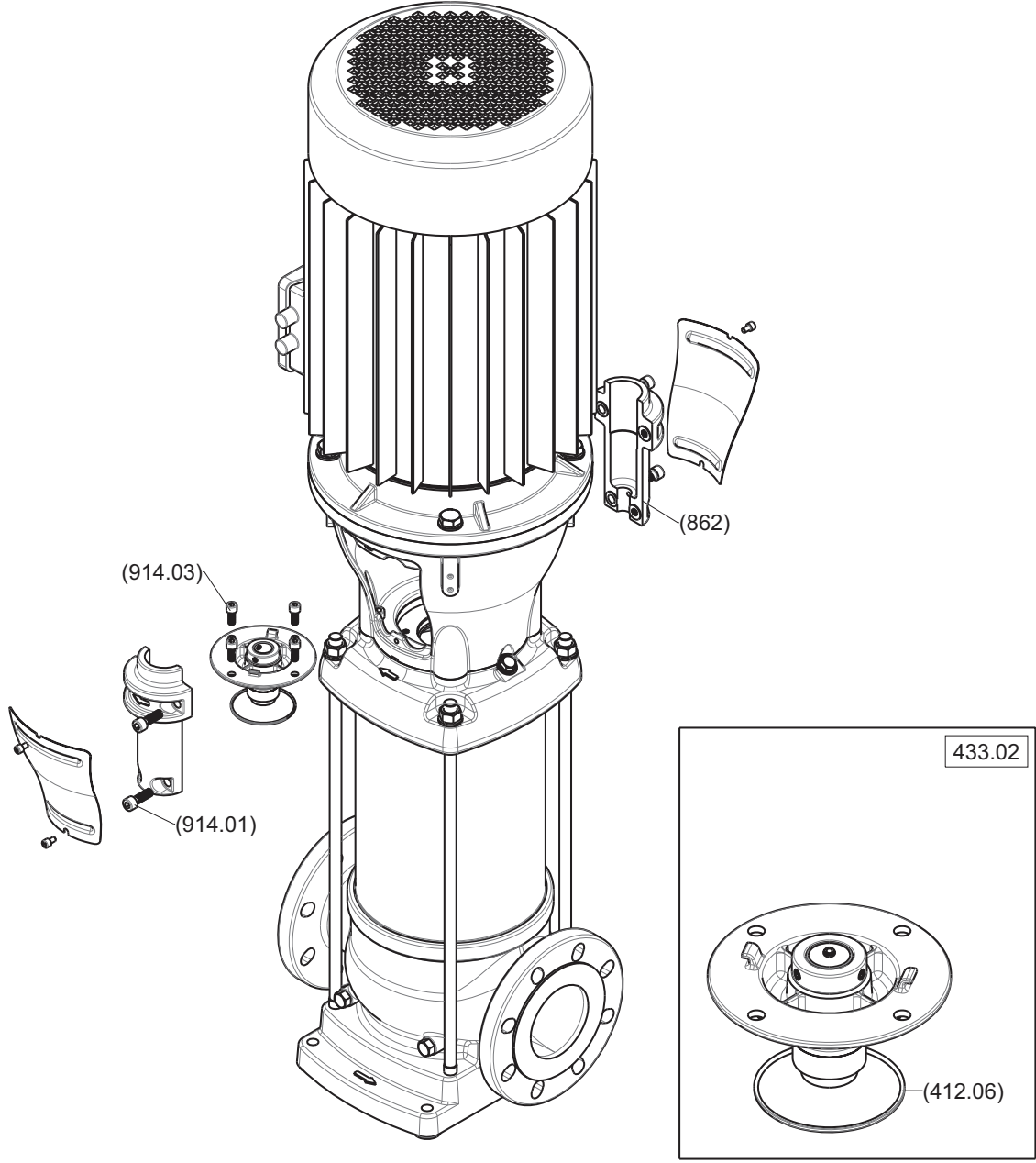
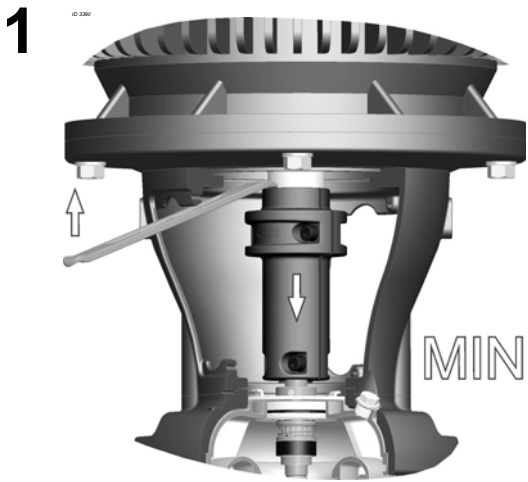


Figure 1: Replacing Cartridge seal

Pos.	Size	Torque
914.01	M10	70 Nm
914.03	M8	10 Nm

20080544-B



20090911

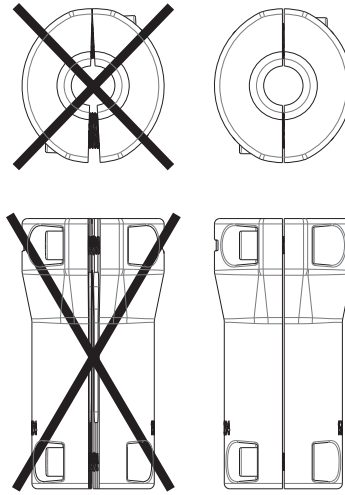
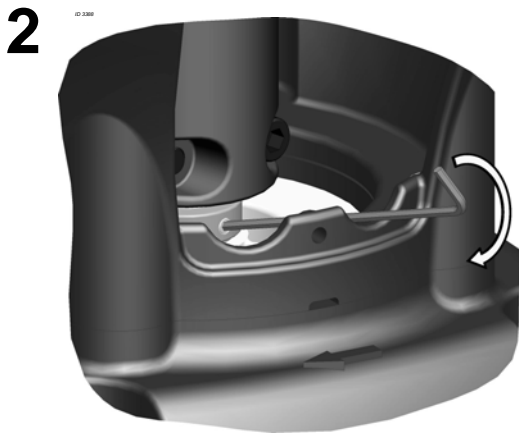
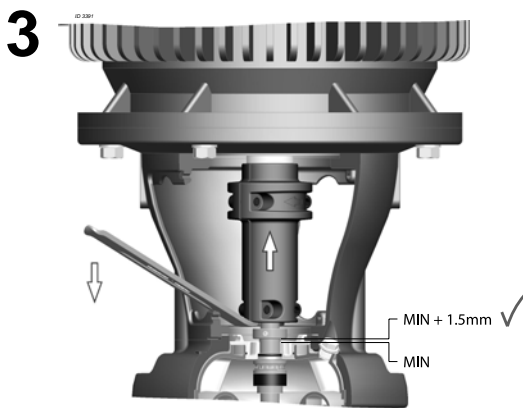


Figure 2: Tighten the coupling

20090528



20090572



20090917-B

2



READ THE (SUPPLEMENTARY) DOCUMENTATION